

GP Link is designed to keep you up-to-date with news and details of service improvements at Mid Cheshire Hospitals NHS Foundation Trust
www.mcht.nhs.uk/gps

Brand New Facilities Treating First Patients

Mid Cheshire Hospitals NHS Foundation Trust (MCHFT) is delighted to announce that the first patients have now received treatment in the brand new Operating Theatres and Critical Care Unit at Leighton Hospital in Crewe.



Patients receiving intensive or high dependency care were transferred into new facilities on Monday, March 31, whilst the first operations took place in the new Theatres on Monday, April 28, 2014.

The £22.8million project has seen the creation of 14 Critical Care bays and eight Operating Theatres, and replaces facilities which were in place when the hospital first opened in 1971. The new building is adjacent to, and integrated with, the hospital's existing Treatment Centre, which itself will shortly undergo significant refurbishment to further support an increase in the quality and safety of patient care available.

The Critical Care Unit features 12 regular bed bays, each of which provides a lot more space than in the units that they replace, and two isolation bays which help to further improve infection prevention and control. The new Unit also provides a dedicated room for relatives to discuss patients' conditions with staff, as well as an area where they can relax and recuperate.

Located along the corridor from the Critical Care Unit are the eight new, state-of-the-art Operating Theatres,

each featuring touch screens which allow the surgeons and their staff to control every aspect of the operating environment from one interactive monitor. The brightness, location and even the colour of the lighting can be altered to suit the requirements for each individual procedure, while cameras can be controlled remotely to record and photograph specific aspects of the operation.

Two of the new Theatres are set up in a barn formation – this is where two patients undergo operations in the same room, usually for Orthopaedic procedures such as hip or knee replacements. Each operating area is contained within a clean air enclosure to ensure that infections are not spread between patients, and the setup allows for improved team working and knowledge sharing as well as improving supervision for new surgeons, anaesthetists and practitioners.

In addition to the Barn Theatres, the new build has seen the creation of two Integrated Theatres which are designed primarily to aid Laparoscopic surgery.

For further details and photos, please visit www.mcht.nhs.uk/itic.

in this issue

- P2** • Maternity Care Amongst UK's Safest
- P3** • Improving Care for Learning Disabilities
 - New Surgery to Treat Glaucoma
- P4** • RTT Performance
 - New Chairman

P2



feedback

If you have any feedback on this newsletter, or any suggestions for future articles, please tell us by emailing gp.link@mcht.nhs.uk.

X-Ray Pilot

The Medical Imaging Department at Leighton Hospital will be open for GP access (X-Ray referrals only) on a Saturday morning from 9am to 12.30pm throughout the month of May 2014.

This is a pilot study and any feedback on this service is welcome - please contact Angela Hutchinson on angela.hutchinson@mcht.nhs.uk.

Maternity Care Amongst Country's Safest

Women having babies at MCHFT are provided with the safest care available, according to a recent independent assessment.

The Maternity Unit at Leighton Hospital underwent the thorough review in March 2014 and achieved the highest rating provided by the Clinical Negligence Scheme for Trusts (CNST).

All hospitals with maternity services are assessed for the CNST. The process involves the examination of performance, practices and policies of five standards, each containing ten criteria.

During the evaluation process, assessors undertook live spot checks on aspects such as patients' health records, with a score awarded if the monitoring has identified a minimum of 75% compliance in each of the requirements.

The CNST report received by the Trust following the assessment states: "MCHFT is to be congratulated for successfully demonstrating compliance with the Level 3 requirements of the CNST Maternity Clinical Risk Management Standards 2013/14.

"It is clear that an enormous amount of hard work and dedication has gone into not only preparing for the assessment but also into embedding and monitoring risk management systems across the whole maternity service, and this is reflected in the well-deserved and very high score. There is a committed team with the determination to develop and maintain these standards."

Pam Cornwall, Head of Midwifery at the Trust, said: "I am delighted that we have been awarded CNST Level 3, as it recognises that our patients are receiving an extremely high level of care.

"The rise to becoming a Level 3 Unit is a meteoric achievement, as a progression usually takes at least three years per level. However, we achieved Level 1 status in December 2010, Level 2 in March 2012, and now we have

the highest available.

"I am extremely proud of the team that we have here at the Trust. It has been a mammoth journey and each and every team member has played their part in this success. They are amongst the most experienced and dedicated staff that I have ever worked with, and combined with our brand new facilities, I am thrilled that we can now say that the care provided here is officially amongst the safest in the country."



The Maternity Unit at Leighton Hospital has been undergoing a thorough refurbishment over recent years. The Hospital now boasts a purpose-built Midwifery-Led Unit (MLU) attached to the main Labour Ward, with birthing pools, ambient mood lighting, en-suite facilities and access to a private courtyard available from each MLU room.

A new high-dependency area has also been created for women who require more intensive specialised care during labour, further increasing the safety of their care.

The final areas of the Maternity Unit to receive an upgrade are the Postnatal Ward and the Neonatal Intensive Care Unit. Work is well underway on these areas and they are set to treat their first patients in Summer 2014.

For further information on the Maternity services available, including video tours, please visit www.mcht.nhs.uk/maternity.



Improving Care for Learning Disability Patients

The Trust is committed to ensuring that all of its services are available and accessible to everybody, and the following have recently taken place to improve the care available for those with learning disabilities:

Changing Places

A Changing Places facility, designed to enable disabled people to access toilet and changing facilities in a purpose-built room, is nearing completion at Leighton Hospital. The room will include a ceiling hoist, and will mean that people can access appropriate facilities in a private and dignified setting. The room will be decorated using artwork provided by children from Springfield School in Crewe.

Screening

The Trust is beginning to review screening opportunities for people with learning disabilities. In the first instance this will be for breast screening, and MCHFT would be very grateful if GPs could inform the Trust that a patient has a learning disability on referral so that the necessary reasonable adjustments can be made.

Cheshire and Wirral Partnership

The Trust has strong links with the Cheshire and Wirral Partnership Trust (CWP), who have recently undergone a service redesign.

CWP now has one Community Team with two bases: one at Stalbridge Road in Crewe and the other at Rosemount in Macclesfield. The team are now working with four different pathways - challenging behaviour, mental health, forensic and physical health.

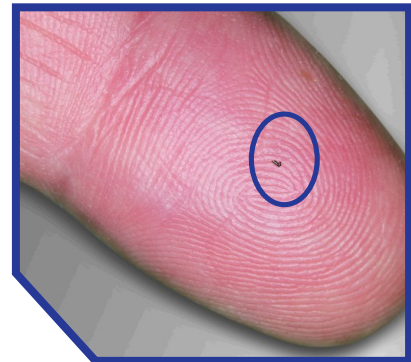
CWP are able to offer training on a number of topics, including learning disability awareness, health messages, health action plans (hospital passports) and the Anticipatory Care Calendar. For further information on training or for advice, CWP can be contacted on 01270 654400 (Crewe), 01625 663631 (Macclesfield) or 01625 661475 (CAMHS).

New Surgery to Treat Glaucoma

Leighton Hospital has become one of the few hospitals in the country to use a new form of minimally invasive surgery for glaucoma – the iStent.

The iStent, a 1millimeter long tube and the smallest medical device to be implanted into the human eye, is inserted into the natural drainage channel of the eye to help drain fluid and reduce eye pressure in patients with glaucoma. The iStent is made from non-magnetic titanium, the same material used in replacement heart valves, so will not be rejected by the body and neither does it cause an allergic reaction.

The surgery is performed by Mr Dan Nguyen, one of the Trust's Consultant Ophthalmologists.



The benefit of the iStent is that it may prevent a patient's glaucoma from getting worse by lowering pressure in the eye. It is potentially suitable for patients who have cataracts and open-angle glaucoma, but may not be suitable for those who have advanced glaucoma or where the natural drainage system has been damaged.

Mr Nguyen is now able to implant an iStent for glaucoma patients during cataract surgery, ensuring that patients could benefit from clearer vision following cataract surgery as well as potentially removing the burden of ongoing topical glaucoma treatment and preventing a patient's glaucoma from getting worse.

For further information regarding this treatment, please contact Deborah Sumner, PA to Mr Nguyen, on 01270 612102.

Pictured above: an iStent

Referral to Treatment Performance

The Trust is pleased to report that, based on the data for 2013-14, the majority of patients started their treatment within 18 weeks of referral.

18 weeks, compared with the desired standard of 95%. A summary of this performance for each specialty area is given below.

For patients who required admission to hospital, the overall total for the year was 91.4% against a standard of 90%. For those not requiring an admission, 96.3% started their treatment within

Further work during 2014 will consolidate this performance to ensure that the standards are achieved for each specialty and that no patients wait longer than 26 weeks overall.

Admitted Pathways (target = 90%)

Specialty	Performance
General Surgery	89.6%
Urology	91.0%
Orthopaedics	89.6%
ENT	94.5%
Ophthalmology	89.6%
General Medicine	95.8%
Gastroenterology	96.7%
Cardiology	100.0%
Dermatology	100.0%
Respiratory Medicine	100.0%
Rheumatology	100.0%
Geriatric Medicine	100.0%
Gynaecology	96.1%
Other	96.9%
Total	91.4%

Non Admitted Pathways (target = 95%)

Specialty	Performance
General Surgery	93.5%
Urology	92.5%
Orthopaedics	93.7%
ENT	93.5%
Ophthalmology	97.0%
General Medicine	98.4%
Gastroenterology	93.8%
Cardiology	98.3%
Dermatology	97.6%
Respiratory Medicine	98.3%
Rheumatology	98.5%
Geriatric Medicine	100.0%
Gynaecology	99.2%
Other	99.9%
Total	96.3%

Trust Appoints New Chairman

The Trust is delighted to announce the appointment of Mr Dennis Dunn MBE as its new Chairman. Dennis succeeds John Moran, who retired from his position on March 31, 2014.

Dennis is currently Pro Vice Chancellor International of Manchester Metropolitan University (MMU) and Dean of MMU Cheshire. He has been a Non-Executive Director at MCHFT since May 2009, having previously been a Governor at the Trust. He was awarded an MBE in the Queen's Birthday Honours in 2010 for his services to Higher Education.

Speaking about his appointment, Dennis said: "I am delighted to have been chosen to lead MCHFT. The Trust is already rated in the top 40 by CHKS and our patients at Leighton Hospital and Victoria

Infirmery, together with Elmhurst Intermediate Care Centre, are treated and cared for by talented and dedicated staff.



"The transformational changes in the health sector and our Trust will continue and the opening of our world class operating theatres serves as a terrific example of how we must respond to the future challenges. My role as Chairman is to steer the Trust to the next level still and I am confident about our future."

Pictured above (L-R): John Moran congratulates the new Chairman Dennis Dunn MBE